



## 'S' Series

Crall 'S' series vessels are designed to use 10", 20" and 30" filter cartridges. These vessels are capable of providing flow rates to 1575 gpm. The pressure rating for the 'S' series is 150 psig.

The 'S' series vessels are designed in accordance with the ASME Boiler and Pressure Vessel Code, Section VIII, Division 1; with the 'U' stamp optional. All 'S' series vessels feature inlet and outlet inline for ease of installation in existing lines.

### STANDARD FEATURES:

**Design:** ASME Section VIII, Div. 1

**Design Pressure:** 150 psig

**Design Temperature:** Up to 450 degrees F

#### Materials of Construction

**Vessel:** Carbon Steel

**Internals:** 304ss

**O-Ring:** Buna 'N'

**Inlet & Outlet:** 150# RF Flange

**Exterior Finish:** Sand blast & shop enamel

**Cover Lift:** Mechanical 18" through 24", Hydraulic 30" and larger

### OPTIONAL FEATURES:

#### Materials of Construction

**Vessel:** 304 or 316 ss (wetted parts only)  
304 or 316 ss (complete)

**Internals:** 316 ss, brass

**O-Ring:** Viton\*, Teflon\* encapsulated silicone, neoprene, others on special request

**Exterior Finish:** Special coatings on request

**Interior Finish:** Coal tar epoxy

**Pressure Gauges:** Direct reading differential

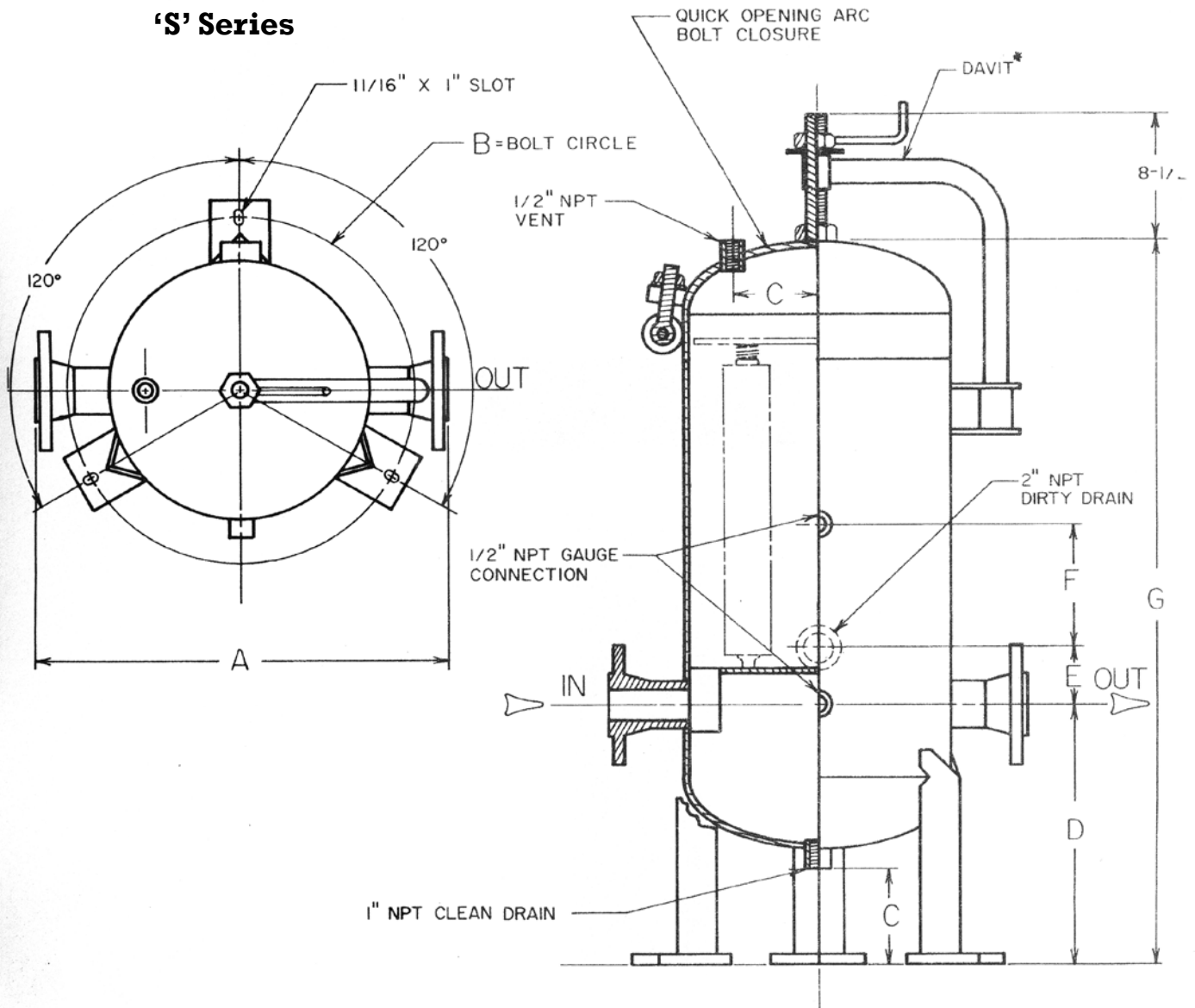
**Inlet & Outlet:** FNPT connections

**High Pressure Ratings:** Higher pressure ratings are available upon request.

The 'S' series vessels will accommodate a wide variety of 2 1/2" diameter cartridges including: string wound, resin impregnated, and pleated paper.

\*A trademark of E.I. DuPont de Nemours Co.

**'S' Series**



MODEL #	IN / OUT	# of 10" CTG.	SHELL O.D.	A	B	C	D	E	F	G
6-2-6 S	2	6	6-5/8	18-5/8	12-1/8	5	14-1/4	2-7/8	10	53
8-5-15 S	2	15	8-5/8	20-5/8	14-1/8	5	14-3/4	2-7/8	10	54
10-7-21 S	2	21	10-3/4	22-3/4	16-1/4	5	15-3/4	2-7/8	10	55-1/2
12-11-33 S	3	33	12-3/4	24-3/4	18-1/4	5	17	3-7/16	10	57-13/16
14-14-42 S	3	42	14	26	20	5	17-5/16	3-7/16	10	58-7/16
16-18-54 S	3	54	16	28	22	5	17-13/16	3-7/16	10	59-7/16
18-24-72 S	3	72	18	30	24	5	18-15/16	3-7/16	10	60-7/16
20-30-90 S	4	90	20	32	26	5	19-9/16	3-15/16	10	62-11/16
24-50-150 S	4	150	24	36	30	5	20-9/16	4-1/16	10	64-13/16
30-70-210 S	6	210	30	42	37-1/2	5	23-1/16	5-1/8	10	69-13/16
32-84-252 S	6	252	32	44	39-1/2	5	23-9/16	5-1/8	10	70-7/8
36-105-315 S	6	315	36	48	43-1/2	5	24-9/16	5-1/8	10	72-7/8